



Meta-Archive

Meta-Update Archiving Solution

This presentation describes the Meta-Archive, the Meta-Update Archiving Solution.

It comprises Instructions for use and configuration as a **Quick Start Guide**..

Please see the Meta-Archive User's Guide for more details.

Software Tool House Inc.

Software Tool House
is a BMC Partner



TAP Premier Partner

Ben Chernys

2017-May-14

Release 5.71



Objectives

ITSM Archiving Pain Points, Challenges. Requirements

Meta-Update In A Nutshell

Meta-Update Archiving Solution

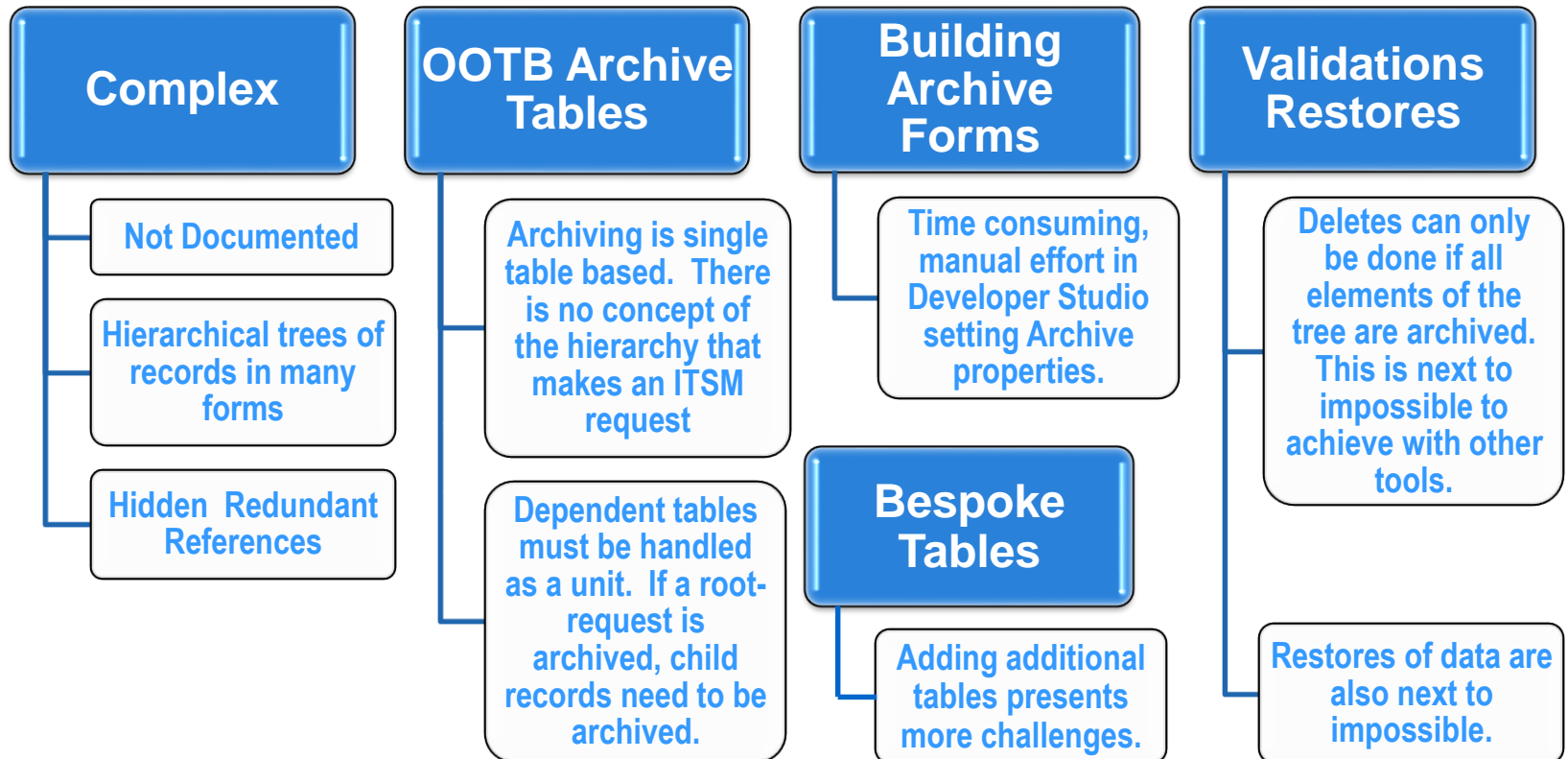
Configuration Files

Archiving Forms: Creating and Administering

Archiving and Restoring

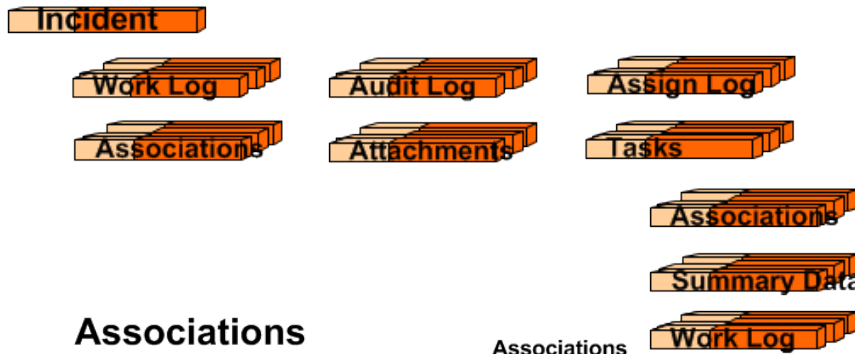
More Information, Next Steps

ITSM Archiving Pain Points





ITSM Archiving Requirements



An ITSM Incident is a complex tree of records in many forms and levels.

Archival must treat a single Root Request and its tree of records as *one unit*.

An ITSM Incident may be associated to a variety of other root requests. These are also associated to other root requests.

Only if *all* these requests are “archivable”, can the original Incident be archived.



Software Tool House Inc
www.softwaretoolhouse.com

Meta-Update In a Nutshell

ETL – Extract Transform Load – Scripting tool

- Meta-Update allows *any* BMC Remedy administrator / developer to automate *any* ETL data operation – in record time.

*with no need
for API or
programming
skills.*

*with no staging forms,
no workflow,
no customizations,
no server changes.*



Easy, Quick, Robust — Savings for any Remedy shop

Simple

One single
ASCII "ini" file

No Staging
forms and
Merge
workflow

Scripts can be
done in
minutes

Time To Market

Order of
magnitude
reductions in
time and
efforts

Clean

Uses BMC
Remedy API

No ARS / ITSM
server
changes

No -ITSM-
Customization

Auditable

Logging with
full control

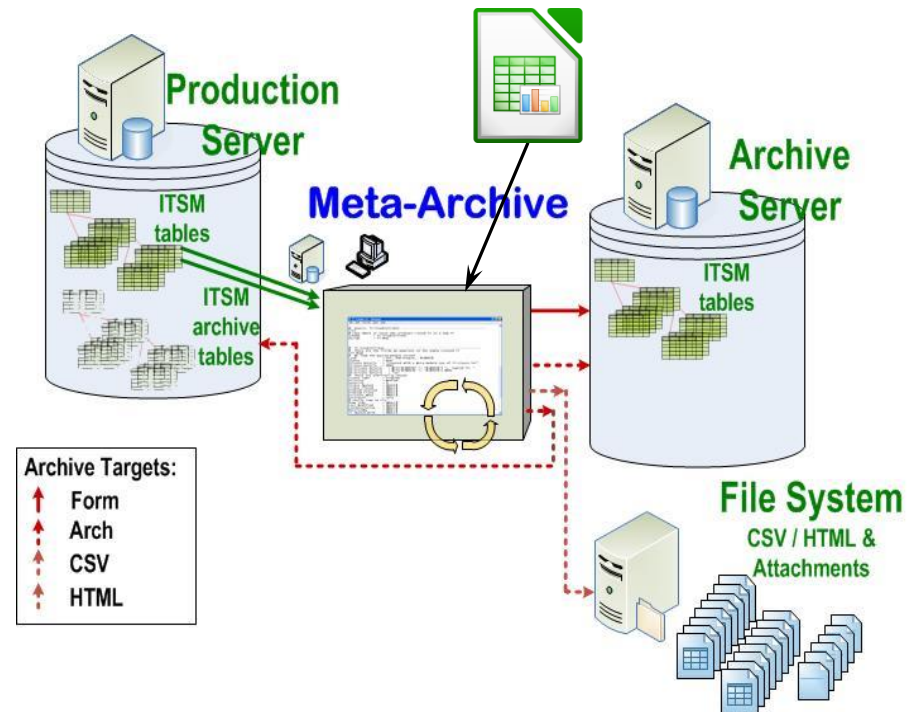
Configurable
Record
Audits

Remedy Client
Logging



Introducing Meta-Archive

- Meta-Archive lets you configure your forms and archiving rules in an Excel spreadsheet.
- With Meta-Archive you can archive to a combination of targets: Archive forms on the same server, an ITSM on an Archive server, CSV files and HTML files.





Installation & Running

- Meta-Update must be licensed and installed for the Archive & Production servers.
- The Archiving scripts and config files are a separate zip file which must be expanded.
- Validate the configuration spread sheet for your ITSM release and environment. If you make changes, generate the CSVs.

You can fill in our Meta-Update [Trial Request](#) form and participate in our [Live Install](#) service. Meta-Update will then be installed, tested and ready for Archiving.

```
Meta-Update\scripts\Meta-Archive\*
```

You're Ready!



Meta-Archive Distribution

Software Tool House Inc
www.softwaretoolhouse.com

Type	File Name	Expect Customer Configuration	Description
spreadsheet	Arch-Cfg-ITSM-810.xlsx cfg-arch-root.csv cfg-arch-tree.csv cfg-arch-assoc.csv cfg-arch-excl.csv	Yes Expected to be modified by customer.	<p>This is the main configuration file used by Meta-Archive.</p> <p>You can use it to change the Archive table names, the ages for Archiving and Associations, to add your own tables, to disable modules of ITSM that you are not using. You may create copies for your different customers should they have differing retention requirements.</p> <p>It will automatically generate the CSV files when you are ready.</p>
script	100-Arch-Cfg.ini	Yes	<p>This script contains User configurations Config variables need to be reviewed and set</p>
script	350-Arch-FormsAdmin.ini	No	<p>This script builds all configured Archive forms.</p> <p>It is run once only per environment or when new forms are added to the configuration.</p> <p>It can be used to check the status of all Archive forms. It will skip any forms already built if run more than once.</p>
script	500-Arch.ini	No.	<p>This script performs archives.</p> <p>During the initial run, when there is a large backlog of records that must be archived, it is expected that Meta-Update Job Automation will be used to fire this script job.</p> <p>For testing of script or configuration changes, this script will be fired manually.</p>



Meta-Archive Distribution

Software Tool House Inc
www.softwaretoolhouse.com

Type	File Name	Expect Customer Configuration	Description
document	Meta-Update_Job_Automation_Users_Guide.pdf		Meta-Update Job Automation User Manual.
script	000-Jctl.ini	No	This script does Meta-Update Job Automation and controls series of Meta-Update jobs based on a Meta-Update Job Automation spreadsheet.
spreadsheet	Arch-Jobs-sample.xlsx	Yes Specific Job Breakup varies from Enterprise to Enterprise. This will need editing.	<p>This is a sample Meta-Update Job Automation spreadsheet for Meta-Archive.</p> <p>It is expected that for the initial backlog run that this would be configured for the customer's specific data requirements.</p> <p>It is possible that a single job fired weekly or monthly can perform the Archive once the backlog is done. Then, no different spreadsheet will be needed for the monthly run. If the monthly volume is large enough, a different split-up of the jobs would be needed.</p>
script - included files	000-Jctl-Sync.ini 910-Arch-CfgRd.ini 920-Arch-Assoc-Do.ini	No	These scripts are included by the scripts above.



Script Configurations

100-Arch-Cfg.ini



- The Archive script does NOT delete records as they are archived. This is to allow adequate testing.

```
# Cfg,    QryDateFmt    char:    the Remedy Query Date format.  One of:
#                                                mdy | dmy | ymd
#
# Cfg,    Del          bool:    0 No deletes; 1 deletes after a tree is archived
#
# Cfg,    SqlCtr      bool:    0 Do not; 1 use SQL select count(*) queries to
#                                                avoid zero record Launches
#                                                This should not normally be set off.
#
# Cfg,    NoAssocErr  bool:    0 no error if no association cfg (skip assoc check)
#                                                1 error; must have at least one association config
#
### Keep this off to prevent deletes during testing
@Cmd     = Ref,    Cfg,    Del,          0
### Adjust to one of "mdy", "dmy", "ymd" depending on your machines locale
### and date formats and the formats that a Remedy query expects.
@Cmd     = Ref,    Cfg,    QryDateFormat, mdy
### This should not normally require adjustments
@Cmd     = Ref,    Cfg,    SqlCtr,       1
### If no associations are defined for a root request, turn this off else an error will be thrown
@Cmd     = Ref,    Cfg,    NoAssocErr,   1
```

To change this, edit the script so that the value of Del is 1.



Script Configurations

100-Arch-Cfg.ini



- The Archive script sets query dates in the format m/d/y. For the EU, Australia, NZ, and some Asian countries this must be changed.

```
# Cfg,   QryDateFormat  char:   the Remedy Query Date format.  One of:
#                                           mdy | dmy | ymd
#
# Cfg,   Del            bool:   0 No deletes; 1 deletes after a tree is archived
#
# Cfg,   SqlCtr        bool:   0 Do not; 1 use SQL select count(*) queries to
#                                           avoid zero record Launches
#                                           This should not normally be set off.
#
# Cfg,   NoAssocErr    bool:   0 no error if no association cfg (skip assoc c
#                                           1 error; must have at least one association co
#
### Keep this off to prevent deletes during testing
@Cmd    = Ref,   Cfg,   Del,           0
### Adjust to one of "mdy", "dmy", "ymd" depending on your machines locale
### and date formats and the formats that a Remedy query expects.
@Cmd    = Ref,   Cfg,   QryDateFormat, mdy
### This should not normally require adjustments
@Cmd    = Ref,   Cfg,   SqlCtr,        1
### If no associations are defined for a root request, turn this off else an error will be thrown
@Cmd    = Ref,   Cfg,   NoAssocErr,    1
```

To change this, edit the script so that QryDateFormat is one of these three settings: "mdy", "dmy", "ymd".



Meta-Update Archive Configuration

Arch-Cfg-ITSM-810.xlsm



Software Tool House Inc
www.softwaretoolhouse.com



Contents

Meta-Archive Introduction

This spreadsheet is a configuration for the **Meta-Archive Scripts** for the OOTB ITSM 8.1 for the **Incident, Change, Problem, Known Error, Release, Work Order** root requests. This sheet may be adapted to include your own forms or for other root requests.

© 2013-2014 by Software Tool House Inc.

Archive configuration for ITSM 8.1.0

Want more information about Meta-Update? Please click the following links:

Contents

Instructions and Settings

This explains the other sheets in detail. Please read this page to adapt this for other modules or your own customized tables.

Config

Use this sheet to set the archive table names (in formulas) and to create appropriate CSV extract files (with a macro).

root

This sheet defines root forms. All Root Form requests to be archived should be listed in this sheet. Records are queried from these forms and all dependent records (given by the "tree" sheet) are archived for requests returned by this query.

[Management Summary Presentation](#)

tree

This sheet describes the tree of forms and linking fields from the root forms. It can specify forms on two levels. The first level is directly related to a root form and the second level is related to a form on the first level. An example is a Task. A Task has its own set of forms with records related to only the Task form, hence these forms are on level 2.

[Learning Meta-Update](#)

[Trial License Request](#)

assoc

This sheet describes the associations and linking fields from the root forms. A root request can only be archived if and only if all its associated root requests can be archived. This sheet configures association rules and tables.

[Live Install](#)

exclusions

This sheet lists individual Customer companies that will be excluded by the script with this configuration file.

Meta-Update

Meta-Update is used to automate any ARS / ITSM data ETL - **Extract, Transform, Load** operation:

- without staging forms, workflow, or any server changes at all
- without any programming skills at all
- in a language your ARS admin already speaks

Copyrights

Meta-Archive and **Meta-Update** are trademarks of Software Tool House Inc.
All **Meta-Archive** and **Meta-Update** documentation and software including this sheet are
© Copyright 1996 through 2014 by Software Tool House, Inc.





Meta-Update Archive Configuration

Arch-Cfg-ITSM-810.xlsm



Software Tool House Inc
www.softwaretoolhouse.com



Instructions

root		assoc	
Describes each "Root Request" such as Incidents, Problems, Changes, that participate in archiving.		Describes the root requests' associations to be validated as ready to be archived before archiving the root request.	
Form	This is the name of the root request form. It is one of these forms that will be queried when an archive is run.	Root Form	One of the above forms in the root sheet.
Enable	Must be 1. It will be flagged as an error is not equal to 1.	Enable	If 1 will participate in the archive script. If 0, table ignored.
Delete Flag	Should be 1. No deletions of any kind will happen if the root's Delete Flag is not 1; records will still be archived.	Src Asc Form	The Root Form's Association form.
Archive Qualification	A qualification that is appended to the archive qualification. It is used to restrict the records to be archived. It used as "... and (qual)" in the query qualification. Use of "@date@" in the text will be replaced with the archive date age setting and the Date Field will not be used.	Tgt Form	When Associated, the value and name of the associated root request form in the association record.
Age	Age of root requests eligible for archiving.	Src Tgt Form Value	A value that in the above field of the Src Asc Form that indicates and association with the Src Tgt Form.
Company Field	If a root request can have customer company specific ages, this specifies the name of the field in the root request form that will contain the Company name on the Tenant Ages sheet.	Src Tgt Form Value	A value that in the above field of the Src Asc Form that indicates and association with the Src Tgt Form.
tree		Src Asc Id Field	
Describes the tree of forms making up a root request		The field of the Src Asc Form that contains the source root request id.	
Level	Must be 1 or 2	Age	Age of root requests eligible for archiving. Set to a formula copying root ages.
Root Form	One of the above forms in the root sheet.	Exclusions	
Source Form	The name of a child form of the Upper Form.	Lists any companies that should be excluded from this Config file.	
Enable	If 1 will participate in the archive script. If 0, table (and all its children)	Company	Required. If this configuration is for general use - that is a specific company's config file would have 'Company' = "x" added to all Root Queries - then exclude all companies that will be handled through their own config file.
Delete Flag	If this form is enabled and the Delete Flag set to 1 then records will be deleted		
Upper Form	If the level is 1, this form must equal the Root-Request form. If the level is 2 it must equal one of the level 1 source forms on a preceeding row.	General Tips	
Source Field	The name of a field that will be queried and makes the dependency against the upper form - the upper form's value on the source form. A query is formed like: '\$Source Field\$' = "\$Upper Field\$".	Handling different types of the same root requests	
Upper Field	The name of the upper form's field who's value will be in the dependent forms field. A query is formed like: '\$Source Field\$' = "\$Upper Field\$".	Say you have two different requirements for Incidents depending on the Incident Priority. For example, for one Priority, you may want to archive after three years and for the rest after one year.	
Archive Form	The name of the archive form for this Source form. The script, 350-ArchAdmin.ini will set and reset archive form properties to manage your archive forms according to this configuration sheet.	The easiest way to do this is to save two different copies of this spreadsheet and generate two different sets of CSVs with the qualifications being changed to exclude and include the special company. That is, add the text "'Priority' = 'xxx'" and 'Priority' != "xxx" to the incident qualification.	





Meta-Update Archive Configuration

Arch-Cfg-ITSM-810.xlsm



Software Tool House Inc
www.softwaretoolhouse.com



Config

Archive Table Names

Please specify a suffix for Source table names used when naming the Archive table.

Archive Table Name Suffix: **-ARC**

Suffix used in root and tree sheet formulas for the Archive Table Names. Once built, should not be changed.

Export to CSVs

Please specify an output file "prefix" such as C:\cfg\cfg-arch

With C:\cfg\cfg-arch, files will be: C:\cfg\cfg-arch-root.csv, C:\cfg\cfg-arch-tree.csv, C:\cfg\cfg-arch-assoc.csv, and, C:\cfg\cfg-arch-excl.csv.

Directory C:\cfg\ must exist before the button is pressed.

Simply copy a directory from Windows explorer and add a file "prefix" such as "cfg-arch-uni-restore", or, "test-1".

Output files' prefix: **e:\Dta\BST\Dev\Mupd\dev\proj\Unisys\2014-02-14-Arch\cfg-arch-uni-restore**



Press the button to the left to export the files.

With the example, these four files will be created:

- cfg-arch-root.csv
- cfg-arch-tree.csv
- cfg-arch-assoc.csv
- cfg-arch-excl.csv

Make as many of these sets of four files as you need.

You can set up different companies, ages, forms, associations, as needed.



Unless you start Excel in a specific directory, it is best that an explicit path be specified for the file name prefix.

Save copies of the spreadsheet with generated files' prefix for reference.

Macros must be enabled to produce the four CSV files.





Meta-Update Archive Configuration

Arch-Cfg-ITSM-810.xlsm



Software Tool House Inc
www.softwaretoolhouse.com



Root Request Configuration

The root sheet is the set of ITSM root requests. These are the Archive configurable items.

Form	Enable	Delete Flag	Archive Qualification	Date Field	Archive Form	Age
HPD:Help Desk	1	1	((('Status' = "Closed" and 'Closed Date' < "@date@") or ('Status' = "Cancelled" and 'Cancelled Date' < "@date@")) and not ('VIP' = "Yes"))	Closed Date	HPD:Help Desk-ARC	1y
CHG:Infrastructure Change	1	1	(('Change Request Status' = "Closed" and 'Closed Date' < "@date@") or ('Change Request Status' = "Cancelled" and 'Last Modified Date' < "@date@") or ('Change Request Status' = "Rejected" and 'Last Modified Date' < "@date@"))	Completed Date	CHG:Infrastructure Change-ARC	1y
PBM:Problem Investigation	1	1	((('Investigation Status' = "Closed" and 'Closed_Date' < "@date@") or ('Investigation Status' = "Cancelled" and 'Last Modified Date' < "@date@") or ('Investigation Status' = "Rejected" and 'Last Modified Date' < "@date@")))	Closed_Date	PBM:Problem Investigation-ARC	1y

Check or modify the Age and Archive Qualification fields.

You may make copies of the spreadsheet with different qualifications and ages as needed.

The Date Field is ignored when the Qualification includes @date@ which becomes Now - Age.

Add ('Company' = "xx") to the qualifications as needed except on the *default* sheet.

Fill in Company exclusions only on the *default* sheet.



Qualification errors will cause the script to fail.

Validate qualifications with SthMqry.exe.





Meta-Update Archive Configuration

Arch-Cfg-ITSM-810.xlsm

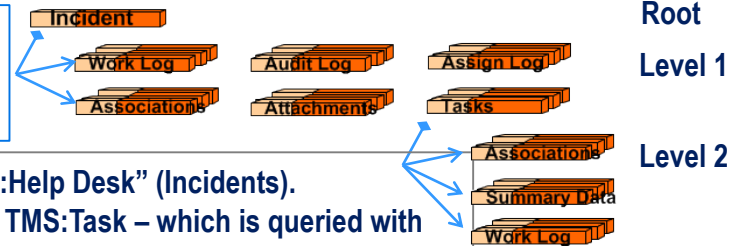


Software Tool House Inc
www.softwaretoothouse.com



Tree Configuration


The tree sheet describes, for each root request, the set of level one and two forms and how they are related.



- The root is “HPD:Help Desk” (Incidents).
- A level 1 form is TMS:Task – which is queried with Incident’s data.
- A level 2 form is TMS:WorkInfo – which is queried from TMS:Task’s data.

Root Form	Lvl	Source Form	Enable	Delete Flag	Source Field	Upper Field	Archive Form	Source Field View
HPD:Help Desk	1	HPD:Associations	1	1	Request ID02	Incident Num	HPD:Associations-ARC	Request_ID
HPD:Help Desk	1	HPD:Attachments	1	1	Incident Number	Incident Num	HPD:Attachments-ARC	Incident_N
HPD:Help Desk	1	HPD:Help Desk Assignment	1	1	Incident Entry ID	1	HPD:Help Desk	Incident_I
HPD:Help Desk	1	HPD:Help Desk Audit Log	1	1	Incident Number	Incident Num	HPD:Help Desk	Incident_N
HPD:Help Desk	1	HPD:HelpDesk_AuditLogSys	1	1	Original Request ID	Incident Num	HPD:Help Desk	Incident_N
HPD:Help Desk	1	HPD:Impacted Areas	1	0	Incident Number	Incident Num	HPD:Help Desk	Incident_N
HPD:Help Desk	1	HPD:IncidentInterface_Crea	1	1	Incident Number	Incident Num	HPD:Help Desk	Incident_N
HPD:Help Desk	1	HPD:WorkLog	1	1	Incident Number	Incident Num	HPD:Help Desk	Incident_N
HPD:Help Desk	1	PBM:Investigation	0	1	Request ID01	Incident Num	PBM:Investigation-ARC	Request_ID
HPD:Help Desk	1	PBM:Solution DB	1	1	Request ID01	Incident Num	PBM:Solution DB	Request_ID
HPD:Help Desk	1	TMS:Association	1	1	Request ID01	179	TMS:Association-ARC	RootRequ
HPD:Help Desk	1	TMS:Task	1	1	Request ID01	179	TMS:Task-ARC	RootRequ
HPD:Help Desk	1	TMS:Variable	1	1	Request ID01	179	TMS:Variable-ARC	RootRequ
HPD:Help Desk	2	TMS:AuditLog	1	1	Request ID01	179	TMS:AuditLog-ARC	Audit_Rec
HPD:Help Desk	2	TMS:TaskEffort	1	1	Request ID01	179	TMS:TaskEffort-ARC	TaskInsta
HPD:Help Desk	2	TMS:WorkInfo	1	1	Request ID01	179	TMS:WorkInfo-ARC	TaskOrTas

Add rows for any customized forms you may have.

 Field name errors will cause the script to fail.
Validate field names with SthMsch.exe.





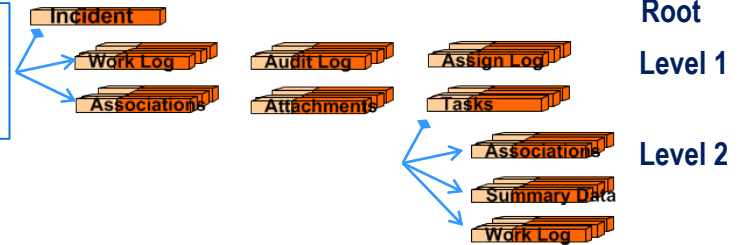
Meta-Update Archive Configuration

Arch-Cfg-ITSM-810.xlsm



Tree Configuration

The tree sheet describes, for each root request, the set of level one and two forms and how they are related.



Normal data tables that can contain child records are configured in the tree form.

Join forms may also be configured, even though the tables making up the join forms will also be configured.

Joins may not have required "Core" fields. Remedy generated Archive forms do. Meta-Archive assigns a dot "." for such text fields and the current time for such date fields.

Form Name	Parent Form	Parent Field	Child Field	Child Field	Child Field	Child Field	Child Field	Child Field	Child Field
HPD:Help Desk	1	HPD:Help Desk Assignment	1	1	Incident Entry ID	Incident N			
HPD:Help Desk	1	HPD:Help Desk Audit Log	1	1	Incident Number	Incident N			
HPD:Help Desk	1	HPD:HelpDesk_AuditLogSys	1	1	Original Request ID	Incident N			
HPD:Help Desk	1	HPD:Impacted Areas	1	0	Incident Number	Incident N			
HPD:Help Desk	1	HPD:IncidentInterface_Crea	1	1	Incident Number	Incident N			
HPD:Help Desk	1	HPD:WorkLog	1	1	Incident Number	Incident N			
HPD:Help Desk	1	PBM:Investigation	0	1	Request ID01	Incident N			
HPD:Help Desk	1	PBM:Solution DB	1	1	Request ID01	Incident N			
HPD:Help Desk	1	TMS:Association	1	1	RootRequestInstanceID	179			
HPD:Help Desk	1	TMS:Task	1	1	RootRequestInstanceID	179			
HPD:Help Desk	1	TMS:Variable	1	1	RootRequestInstanceID	179			
HPD:Help Desk	2	TMS:AuditLog	1	1	Audit Record Instance ID	179	TMS:AuditLog-ARC	Audit_Rec	
HPD:Help Desk	2	TMS:TaskEffort	1	1	TaskInstanceID	179	TMS:TaskEffort-ARC	Taskinstar	
HPD:Help Desk	2	TMS:WorkInfo	1	1	TaskOrTaskGroupInstance	179	TMS:WorkInfo-ARC	TaskOrTas	





Meta-Update Archive Configuration

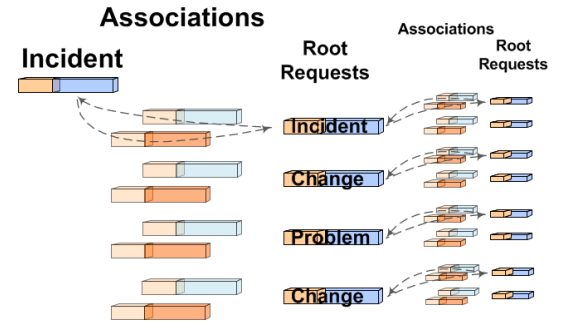
Software Tool House Inc
www.softwaretoolhouse.com



Associations Configuration

The assoc sheet describes the set of associations to other root requests. This ensures records can only be archived when not associated to other root requests that are not ready for archiving.

Arch-Cfg-ITSM-810.xlsm



Root Form	LEN	Src Asc Form	Tgt Form	Age	Src Tgt Form Field	Src Tgt Form Value	Tgt Asc Form	Src Asc ID Field	Src Src ID Field	Tgt Tgt Form Field	Tgt Tgt Form Status Field	Status Value Names	Status Values
HPD:Help Desk	1	HPD:Associations	PBM:Problem	1d	Form01 R Problem	PBM:Problem Investigation							
HPD:Help Desk	1	HPD:Associations	PBM:Solution	1s	Form01 R Solution	PBM:Solution DB Associations							
HPD:Help Desk	1	HPD:Associations	CHG:Infrastruc	1y	Form01 R Infrastruc	CHG:Associations							
HPD:Help Desk	1	HPD:Associations	HPD:Structure Change										

Check or modify the Age fields.

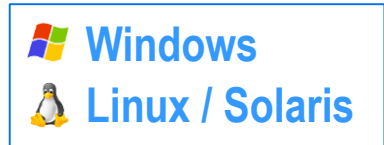
Add rows for any customized forms you may have.

Field name errors will cause the script to fail. Validate field names with SthMsch.exe.

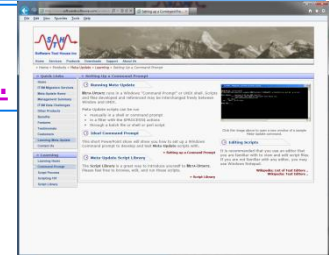


Running Archive

Preparing the command prompt



[Help on setting up and using a Command Prompt.](#)



➤ Set PATH

```
path D:\Apps\SoftwareToolHouse\bin;%path%
```

```
export PATH=/apps/STH/bin:$PATH
```

```
export LD_LIBRARY_PATH=/apps/STH/bin:$LD_LIBRARY_PATH
```

➤ Set Script Path

```
set SthScriptPath=D:\Dta\Dev\Arch\Scripts\500-Archive\Include;%SthScriptPath%
```

```
export SthScriptPath=~/.Dev/Arch/MupdScripts/500-Archive/Include:$SthScriptPath
```

➤ Change to your working directory

```
cd D:\Dta\Dev\Arch\wrk
```

```
cd ~/.wrk
```

➤ Set Meta-Update Licensing

```
SthLic.cmd dev
```

```
. SthLic.sh dev
```

[Help on generating your SthLic file on next page.](#)





Build your SthLic.cmd file

➤ Run `SthLicUpd.exe` to build your `SthLic.cmd` (or `SthLic.sh`) file. This file will set environment variables.



Do this on your machines.

➤ This needs to be run once when you open a new command or terminal window

➤ Run `SthLicUpd.exe` to encrypt other ARS server passwords if needed.

```
Administrator: Cmd Box
e:\qqq> SthLicUpd.exe Prompt -licpath .\ -out .\SthLic.cmd

SthLicUpd      Version 1.00
               (c) Copyright 1996-2012 by Software Tool House Inc.
               www.softwaretoolhouse.com
..got 2 license files

..for server   1 - sthv1
Please enter a short name such as dev or prod or nothing to continue [ ] > dev
Enter another short name for the server or nothing when done [ ] >
Enter the connection address for the server [sthv1] >
Enter the connection address for the Admin server if different [sthv1] >
Enter an RPC port or 0 if using port mapper [0] > 2501
Enter the ARS user id > Demo
Enter the password for ARS user Demo; use '-' for none > .
Would you like the password encrypted? [Y] >
```



Step 1: Build Archive Forms

- Run Forms Admin script with **set, reset, check.**

350-Arch-FormsAdmin.ini



The **set** operation places a load on the server and should be done off peak hours.

It may take an hour or more to complete.

STH & customer tests on various server releases have shown a possibility of ARS Server crashes!

This seems better in 8.1.

```
Cmd Box
2010-05-03 9:07:35.38
e:\Dta>
SthMupd 350-Arch-FormsAdmin.ini Do -cmd set
                                         -file cfg-arch
```

The Meta-Update script sets the archive properties of configured forms causing the archive forms to be built for root forms and their trees.



Step 2: Remove Archive Links

- Run Forms Admin script with **set**, **reset**, **check**.

350-Arch-FormsAdmin.ini



The **reset** operation, while *not* placing a load on the server, should be done off peak hours.

STH & customer tests on various server configurations have indicated a possibility of ARS Server crashes!

```
Cmd Box
2010-05-03 9:07:35.38
e:\Dta>

SthMupd 350-Arch-FormsAdmin.ini Do -cmd reset
                                     -file cfg-arch
```

The Meta-Update script sets the archive properties of configured forms to None severing the links between the source and archive forms for root forms and their trees.



Step 3: Check Archive Forms

- Run Forms Admin script with **set**, **reset**, **check**.

350-Arch-FormsAdmin.ini



```
Cmd Box
2010-05-03 9:07:35.38
e:\Dta>

SthMupd 350-Arch-FormsAdmin.ini Do -cmd check
                                     -file cfg-arch
```

The Meta-Update script simply issues messages to the screen and logs.
Ensure all Statuses are "Ok".



Step 4a: Configuring Archive Delete

500-Arch.ini



- The Archive script, as delivered, does NOT delete records as they are archived. This is to allow adequate testing.

```
#-----  
[Cfg]  
# Configuration assignments  
#  
# Output Tags  
# Cfg, Del bool: 0 No deletes; 1 deletes after a tree is archived  
#  
@Cmd = Ref, Cfg, Del, 0  
#-----  
[Main]  
[Do]
```

To change this, edit the script so that the value of Del is 1.



Step 4: Perform an Archive

- Run the Archive script with ***arch***, ***restore***.

500-Arch.ini



```
Cmd Box
2010-05-03 9:07:35.38
e:\Dta>

SthMupd 500-Arch.ini Do      -cmd arch
                             -file cfg-arch
                             -qry  "1=1"
```

Use Meta-Update to copy data from the source forms to the archive forms, and *if configured*, to delete the data from the source forms.



Step 5: Review Archive Output

500-Arch.ini



- The Archive script produces three CSV output files with each run in addition to the Meta-Update log file.

All deleted records

px-del.csv

Root Form	Root Id	Root 179	Del Form	Del Id
HPD:Help Desk	INC_CAL_1000023	AG00123F73CF5Eq4TSQ_uMxAgcUQB	TMS:WorkInfo	TAS0000000000016
HPD:Help Desk	INC_CAL_1000023	AG00123F73CF5Eq4TSQ_uMxAgcUQB	TMS:Task	TAS0000000000017
HPD:Help Desk	INC_CAL_1000023	AG00123F73CF5Eq4TSQ_uMxAgcUQB	HPD:WorkLog	WLG0000000000023
HPD:Help Desk	INC_CAL_1000023	AG00123F73CF5Eq4TSQ_uMxAgcUQB	HPD:Impacted Areas	HIA0000000000023
HPD:Help Desk	INC_CAL_1000023	AG00123F73CF5Eq4TSQ_uMxAgcUQB	HPD:Help Desk	INC0000000000025
HPD:Help Desk	INC_CAL_1000021	AG00123F73CF5Eq4TSQgeMxAgbUQB	TMS:Task	TAS0000000000014
HPD:Help Desk	INC_CAL_1000021	AG00123F73CF5Eq4TSQgeMxAgbUQB	HPD:WorkLog	WLG0000000000021
HPD:Help Desk	INC_CAL_1000021	AG00123F73CF5Eq4TSQgeMxAgbUQB	HPD:Impacted Areas	HIA0000000000021
HPD:Help Desk	INC_CAL_1000021	AG00123F73CF5Eq4TSQgeMxAgbUQB	HPD:Help Desk	INC0000000000023
HPD:Help Desk	INC_CAL_1000015	AG00123F73CF5Eq4TSQvOExAgYUQB	TMS:WorkInfo	TAS0000000000013
HPD:Help Desk	INC_CAL_1000015	AG00123F73CF5Eq4TSQvOExAgYUQB	TMS:WorkInfo	000000000000004
HPD:Help Desk	INC_CAL_1000015	AG00123F73CF5Eq4TSQvOExAgYUQB	TMS:Task	TAS0000000000009
HPD:Help Desk	INC_CAL_1000015	AG00123F73CF5Eq4TSQvOExAgYUQB	HPD:WorkLog	WLG0000000000015
HPD:Help Desk	INC_CAL_1000015	AG00123F73CF5Eq4TSQvOExAgYUQB	HPD:Impacted Areas	HIA0000000000015
HPD:Help Desk	INC_CAL_1000015	AG00123F73CF5Eq4TSQvOExAgYUQB	HPD:Help Desk	INC0000000000017

Records with associations not ready for archive

px-not-arch.csv

Root Form	Root Id	Root 179	Asc Form	Asc Form Id	Msg
HPD:Help Desk	INC_CAL_1000005	AG001	PBM:Problem Investigation	PBI_CAL_1000004	root had non archivable association
HPD:Help Desk	INC_CAL_1000003	AG001	PBM:Problem Investigation	PBI_CAL_1000003	root had non archivable association
HPD:Help Desk	INC_CAL_1000002	AG001	PBM:Problem Investigation	PBI_CAL_1000002	root had non archivable association
HPD:Help Desk	INC_CAL_1000001	AG001	PBM:Problem Investigation	PBI_CAL_1000001	root had non archivable association

Records archived or restored

px-idlog.csv

Time	Server	Cntl section	Assign section	User	Schema	Key	Operation	Op2	Result
2013-11-17 16:38	cent	Do-arch-Upd		Demo	HPD:Help Desk-ARC	INC0000000000002	Create	Merge	OK
2013-11-17 16:38	cent	Do-arch-x		Demo	HPD:Impacted Areas-ARC	HIA0000000000002	Create	Merge	OK
2013-11-17 16:38	cent	Do-arch-x		Demo	HPD:WorkLog-ARC	WLG0000000000002	Create	Merge	OK
2013-11-17 16:38	cent	Do-arch-l2		Demo	TMS:Task-ARC	TAS0000000000002	Create	Merge	OK
2013-11-17 16:38	cent	Do-arch-l2		Demo	TMS:Task-ARC	TAS0000000000003	Create	Merge	OK
2013-11-17 16:40	cent	Do-arch-Upd		Demo	HPD:Help Desk-ARC	INC0000000000003	Create	Merge	OK
2013-11-17 16:40	cent	Do-arch-x		Demo	HPD:Impacted Areas-ARC	HIA0000000000003	Create	Merge	OK
2013-11-17 16:40	cent	Do-arch-x		Demo	HPD:WorkLog-ARC	WLG0000000000003	Create	Merge	OK
2013-11-17 16:41	cent	Do-arch-l2		Demo	TMS:Task-ARC	TAS0000000000004	Create	Merge	OK
2013-11-17 16:41	cent	Do-arch-Upd		Demo	HPD:Help Desk-ARC	INC0000000000004	Create	Merge	OK



Archive Output: Id Log

500-Arch.ini



➤ Standard Meta-Update Id Log file.

	A	B	C	D	E	F	G	H	I	J
	Time	Server	Cntl section	Assign section	User	Schema	Key	Operation	Op2	Result
1										
2	2013-11-17 16:38	cent	Do-arch-Upd		Demo	HPD:Help Desk-ARC	INC0000000000002	Create	Merge	OK
3	2013-11-17 16:38	cent	Do-arch-x		Demo	HPD:Impacted Areas-ARC	HIA0000000000002	Create	Merge	OK
4	2013-11-17 16:38	cent	Do-arch-x		Demo	HPD:WorkLog-ARC	WLG0000000000002	Create	Merge	OK
5	2013-11-17 16:38	cent	Do-arch-l2		Demo	TMS:Task-ARC	TAS0000000000002	Create	Merge	OK
6	2013-11-17 16:38	cent	Do-arch-l2		Demo	TMS:Task-ARC	TAS0000000000003	Create	Merge	OK
7	2013-11-17 16:40	cent	Do-arch-Upd		Demo	HPD:Help Desk-ARC	INC0000000000003	Create	Merge	OK
8	2013-11-17 16:40	cent	Do-arch-x		Demo	HPD:Impacted Areas-ARC	HIA0000000000003	Create	Merge	OK
9	2013-11-17 16:40	cent	Do-arch-x		Demo	HPD:WorkLog-ARC	WLG0000000000003	Create	Merge	OK
10	2013-11-17 16:41	cent	Do-arch-l2		Demo	TMS:Task-ARC	TAS0000000000004	Create	Merge	OK
11	2013-11-17 16:41	cent	Do-arch-Upd		Demo	HPD:Help Desk-ARC	INC0000000000004	Create	Merge	OK
12	2013-11-17 16:41	cent	Do-arch-x		Demo	HPD:Impacted Areas-ARC	HIA0000000000004	Create	Merge	OK



Archive Output: Delete Log

500-Arch.ini



➤ Logs all records that were deleted.

	A	B	C	D	E	F
1	Root Form	Root Id	Root 179	Del Form	Del Id	
2	HPD:Help Desk	INC_CAL_1000023	AG00123F73CF5Eqc4TSQ_uMxAgcUQB	TMS:WorkInfo	TAS000000000016	
3	HPD:Help Desk	INC_CAL_1000023	AG00123F73CF5Eqc4TSQ_uMxAgcUQB	TMS:Task	TAS000000000017	
4	HPD:Help Desk	INC_CAL_1000023	AG00123F73CF5Eqc4TSQ_uMxAgcUQB	HPD:WorkLog	WLG000000000023	
5	HPD:Help Desk	INC_CAL_1000023	AG00123F73CF5Eqc4TSQ_uMxAgcUQB	HPD:Impacted Areas	HIA000000000023	
6	HPD:Help Desk	INC_CAL_1000023	AG00123F73CF5Eqc4TSQ_uMxAgcUQB	HPD:Help Desk	INC000000000025	
7	HPD:Help Desk	INC_CAL_1000021	AG00123F73CF5Eqc4TSQgeMxAgbUQB	TMS:Task	TAS000000000014	
8	HPD:Help Desk	INC_CAL_1000021	AG00123F73CF5Eqc4TSQgeMxAgbUQB	HPD:WorkLog	WLG000000000021	
9	HPD:Help Desk	INC_CAL_1000021	AG00123F73CF5Eqc4TSQgeMxAgbUQB	HPD:Impacted Areas	HIA000000000021	
10	HPD:Help Desk	INC_CAL_1000021	AG00123F73CF5Eqc4TSQgeMxAgbUQB	HPD:Help Desk	INC000000000023	
11	HPD:Help Desk	INC_CAL_1000015	AG00123F73CF5Eqc4TSQvOExAgYUQB	TMS:WorkInfo	TAS000000000013	
12	HPD:Help Desk	INC_CAL_1000015	AG00123F73CF5Eqc4TSQvOExAgYUQB	TMS:WorkInfo	00000000000004	
13	HPD:Help Desk	INC_CAL_1000015	AG00123F73CF5Eqc4TSQvOExAgYUQB	TMS:Task	TAS000000000009	
14	HPD:Help Desk	INC_CAL_1000015	AG00123F73CF5Eqc4TSQvOExAgYUQB	HPD:WorkLog	WLG000000000015	
15	HPD:Help Desk	INC_CAL_1000015	AG00123F73CF5Eqc4TSQvOExAgYUQB	HPD:Impacted Areas	HIA000000000015	
16	HPD:Help Desk	INC_CAL_1000015	AG00123F73CF5Eqc4TSQvOExAgYUQB	HPD:Help Desk	INC000000000017	

Note
inverse
order of
deletions.



Controlling Archiving

000-Jctl.ini



- Meta-Update Job Automation may be used to enhance performance by breaking up the Archive jobs by server, record chunks, companies, and/or root requests.
- Jobs are set in a Jobs configuration file. The Job Control script fires and controls processes based on the jobs file.
- See Meta-Update Job Automation User's Guide for details on Job Automation.

[Meta-Update_Job_Automation_Users_Guide.pdf](#)



Meta-Update Archive Configuration

Arch-Jobs-sample.xlsx

Software Tool House Inc
www.softwaretoolhouse.com



Job Automation: Sample Jobs file

Jobs are set in a Jobs configuration file. The Job Control script fires and controls processes based on the jobs file.

	Lvl	Seq	En able	Job Classes	Skip When No Cl	ARS Table Name	Job File Source	Job File	Script File	Script Section	Comp any	Chunk- Num	Chunk	Arch ive Conf ig File	Args	Notes
1																
7	1	1	1			HPD:Help C	100-Hpd	100-Hpd_dft-05	500-Arch	Do		5	5000	e:ADI	-start 5000 -max 1000 -c	
8	1	2	1			HPD:Help C	100-Hpd	100-Hpd_dft-06	500-Arch	Do		6	6000	e:ADI	-start 6000 -max 1000 -c	
9	1	2	1			HPD:Help C	100-Hpd	100-Hpd_dft-07	500-Arch	Do		7	7000	e:ADI	-start 7000 -max 1000 -c	
17	1	3	1			HPD:Help C	100-Hpd	100-Hpd_dft-15	500-Arch	Do		15	15000	e:ADI	-start 15000 -max 1000 -c	
18	1	3	1			HPD:Help C	100-Hpd	100-Hpd_dft-16	500-Arch	Do		16	16000	e:ADI	-start 16000 -max 1000 -c	
19	2	1	0			CHG:Infras	200-Chg	200-Chg_dft	500-Arch	Do				e:ADI	-start 0000 -max 0000 -c	
20	2	1	0			PBM:Proble	310-Pbml	310-Pbml_dft	500-Arch	Do				e:ADI	-start 0000 -max 0000 -c	
21	2	1	0			PBM:Knowr	320-PbmE	320-PbmE_dft	500-Arch	Do				e:ADI	-start 0000 -max 0000 -c	
22	2	1	0			PBM:Soluti	320-PbmS	320-PbmS_dft	500-Arch	Do				e:ADI	-start 0000 -max 0000 -c	
23	2	1	0			RMS:Relea	400-Rel	400-Rel_dft	500-Arch	Do				e:ADI	-start 0000 -max 0000 -c	
24	2	1	0			WOI:WorkC	500-Woi	500-Woi_dft	500-Arch	Do				e:ADI	-start 0000 -max 0000 -c	
25	2	2	0			HPD:Help C	110-Hpd	110-Hpd_calbro	500-Arch	Do	Calbro Services			e:ADI	-start 0000 -max 0000 -c	
26	2	2	0						500-Arch	Do	Calbro Services			e:ADI	-start 0000 -max 0000 -c	
27	2	2	0						500-Arch	Do	Calbro Services			e:ADI	-start 0000 -max 0000 -c	
28	2	2	0						500-Arch	Do	Calbro Services			e:ADI	-start 0000 -max 0000 -c	
29	2	2	0						500-Arch	Do	Calbro Services			e:ADI	-start 0000 -max 0000 -c	
30	2	2	0						500-Arch	Do	Calbro Services			e:ADI	-start 0000 -max 0000 -c	
31	2	2	0						500-Arch	Do	Calbro Services			e:ADI	-start 0000 -max 0000 -c	
32	2	3	0						500-Arch	Do	Biosphere			e:ADI	-start 0000 -max 0000 -c	
33	2	3	0						500-Arch	Do	Biosphere			e:ADI	-start 0000 -max 0000 -c	
34	2	3	0						500-Arch	Do	Biosphere			e:ADI	-start 0000 -max 0000 -c	
35	2	3	0						500-Arch	Do	Biosphere			e:ADI	-start 0000 -max 0000 -c	
36	2	3	0			PBM:Soluti	300-PbmS	300-PbmS_biosp	500-Arch	Do	Biosphere			e:ADI	-start 0000 -max 0000 -c	

Formulas set up record chunking.

A second sheet, ArchCfgs, is used in a formula for the -file argument.



All jobs with the same Lvl & Seq are fired simultaneously.

Some experimentation is needed to determine the optimum mix in any given server environment.

Company	Config	Job File Name
		_dft
Calbro Services	_Calbro	_calbro
Biosphere	_Biosphere	_biosphere



Firing Sets of Archive Jobs

- Run the Job Automation script with the Jobs file `500-Arch.ini`
`Arch-Jobs-sample.xlsx`



```
Cmd Box
2010-05-03 9:07:35.38
e:\Dta>

Wrk\2014-05-28> SthMupd 000-Jct1.ini Do -file Arch-Jobs-sample.csv
```

All jobs in the file will be run in batches.
Each will produce a output files based on
the Job Name.



Software Tool House Inc
www.softwaretoolhouse.com

Contact Us

www.SoftwareToolHouse.com

- Binaries, trial licenses, User's Guide available on the web.
- Pick up a trial license with our Live Install and Scripting 101 presentation
- Download the Scripting 101 presentation and the Meta-Update User's Guide
- Look at the samples in the Script Library
- Contact Us at www.softwaretoolhouse.com

We Thank
You for
Your Time



Ben Chernys
+49 171 380 2329

Software Tool House
is a BMC Partner

